

# Whitecross Hereford

## Pupil Premium Impact Statement

The Government introduced the Pupil Premium Grant in April 2011. This grant, which is additional to main Academy funding, is seen by the Government as the best way to address the national inequalities between students eligible for free school meals (FSM), Looked After Children (LAC) and other students. This funding will ensure that funding to tackle disadvantage reaches the students who need it most. The Pupil Premium is allocated to schools and is clearly identifiable in our budget.

Schools can decide how the Pupil Premium is spent as they are best placed to assess what additional provision should be made for the individual students within their responsibility. In making provision for socially disadvantaged students we recognise that not all students who receive free school meals will be socially disadvantaged. We also recognise that not all students who are socially disadvantaged are registered for or qualify for free school meals (FSM). We therefore reserve the right to allocate Pupil Premium funding to support any student or group of students we feel has been legitimately identified as socially disadvantaged.

The Pupil Premium is allocated to children from low-income families who are eligible for free school meals (FSM), or have been eligible at any point in the last 6 years (Ever6) in both mainstream and non-mainstream settings; children who have been looked after continuously for more than six months (LAC) and forces children. This year the Pupil Premium is worth a minimum of £935 per eligible pupil.

### **How much funding do we receive?**

The Pupil Premium funding we received for the academic year 2014 – 2015 was £150,535.00 (paid at £935 per student FSM and £300 per Service family student). We estimate that we shall receive £174,435 (estimated based on £935 per student FSM and £300 Service family student) for the 2015-16 academic year.

### **Why is there a Pupil Premium?**

Students should have the opportunity to achieve well regardless of their economic or social situation. This money helps us to support these students to achieve.

## Are the Pupil Premium funds being used effectively?

The table below summarises the headline GCSE performance of our Pupil Premium students over the last three years.

- We have made further gains in closing the gap between disadvantaged and non-disadvantaged children between 2014 and 2015 in Maths A\* - C (-11%)
- Other measures have seen a widening gap to due to:
  - The impact of entering students on to incomplete pathways that allowed them to gain GCSE grades that were not counted as part of school performance measures, see “Impact of English pathway on 2015 KS4 performance measures” ([https://www.gov.uk/government/uploads/system/uploads/attachment\\_data/file/489087/School\\_inspection\\_update\\_January\\_2016.pdf](https://www.gov.uk/government/uploads/system/uploads/attachment_data/file/489087/School_inspection_update_January_2016.pdf))
  - A significant decline in the performance of disadvantaged students in English

**Important note: data used in the table and graphs below is taken from the school database (SISRA) which allows for the impact of incomplete pathways as referenced above.**

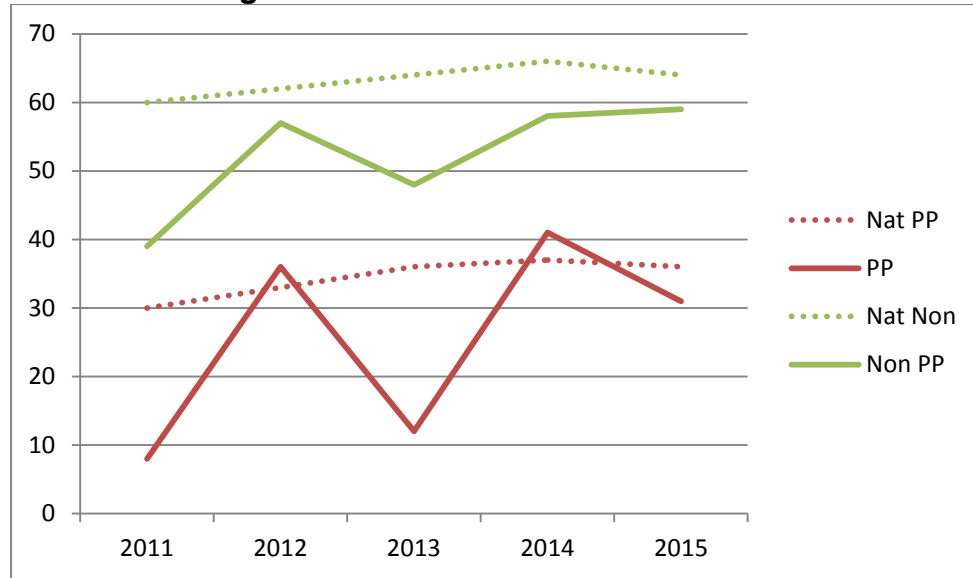
### Headline Pupil Premium figures (FSM6 & LAC)

	2013				2014				2015			
	Cohort	School	National other pupils	Diff %	Cohort	School	National other pupils	Diff %	Cohort	School	National other pupils	Diff %
<b>English Baccalaureate</b>												
Disadvantaged pupils	26	0	27	-27	30	17	28	-11	31	7	28	-21
Other pupils	138	15		-12	149	23		-5	149	18		-10
Within school gap		-15				-6				-11		
<b>5 A* - C including English &amp; mathematics</b>												
Disadvantaged pupils	26	12	67	-55	30	33	62	-29	31	31	63	-32
Other pupils	138	49		-18	149	52		-10	149	59		-4
Within school gap		-37				-19				-28		
<b>English A* - C</b>												
Disadvantaged pupils	26	27	74	-47	30	43	73	-30	31	26	74	-48
Other pupils	138	59		-15	149	56		-17	149	45		-20
Within school gap		-32				-13				-28		
<b>Maths A* - C</b>												
Disadvantaged pupils	26	23	77	-54	30	47	74	-27	31	58	74	-16
Other pupils	138	64		-13	149	64		-10	149	73		-1
Within school gap		-41				-17				-28		

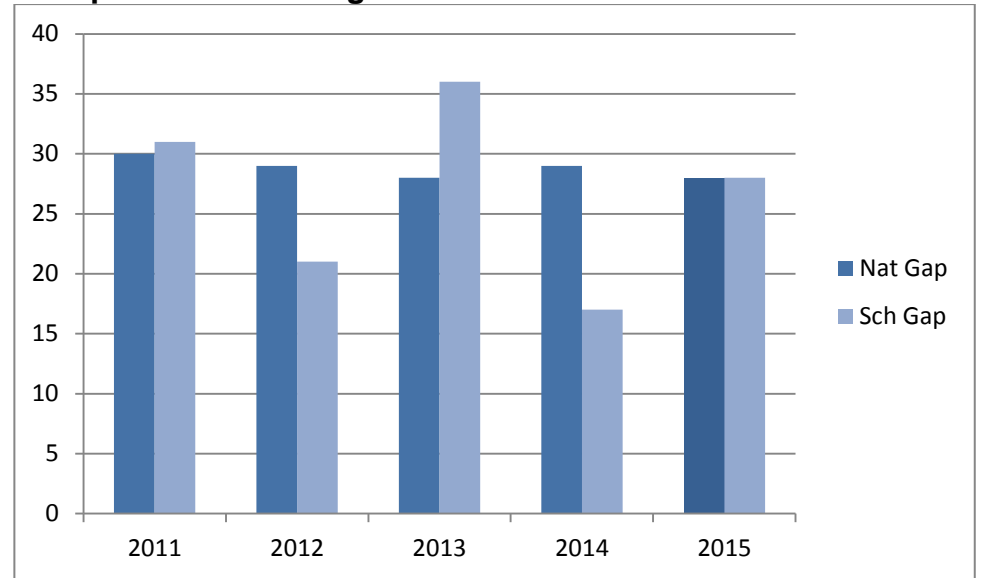
Source: SISRA in school data analysis

## Are we closing the gap?

### 5A\* - C incl. English & maths FSM ever 6 vs non FSM ever 6



### Gap 5A\* - C incl. English & maths FSM ever 6 vs non FSM ever 6

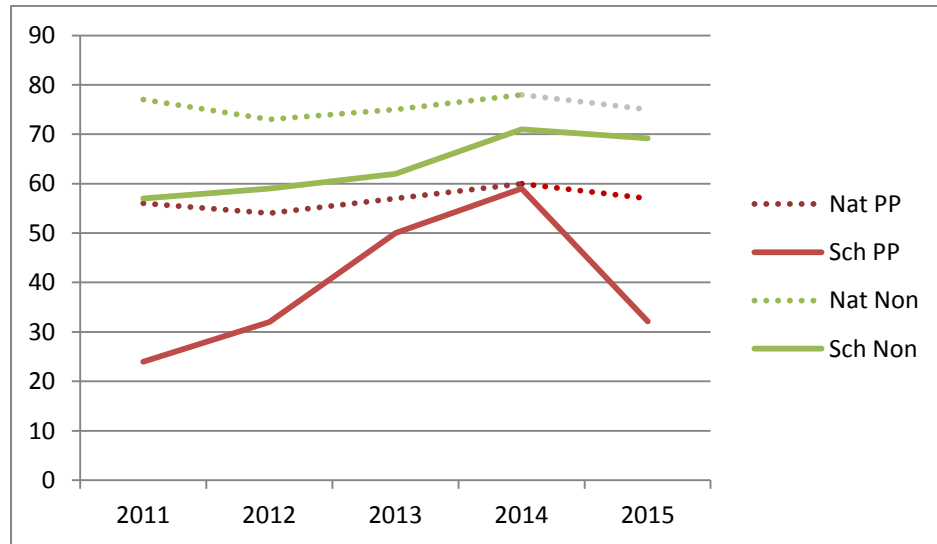


Source: RAISEonline Summary Report based on unvalidated 2015 data, FFT Aspire & School data (SISRA)

### 5+A\*-C including English and Mathematics

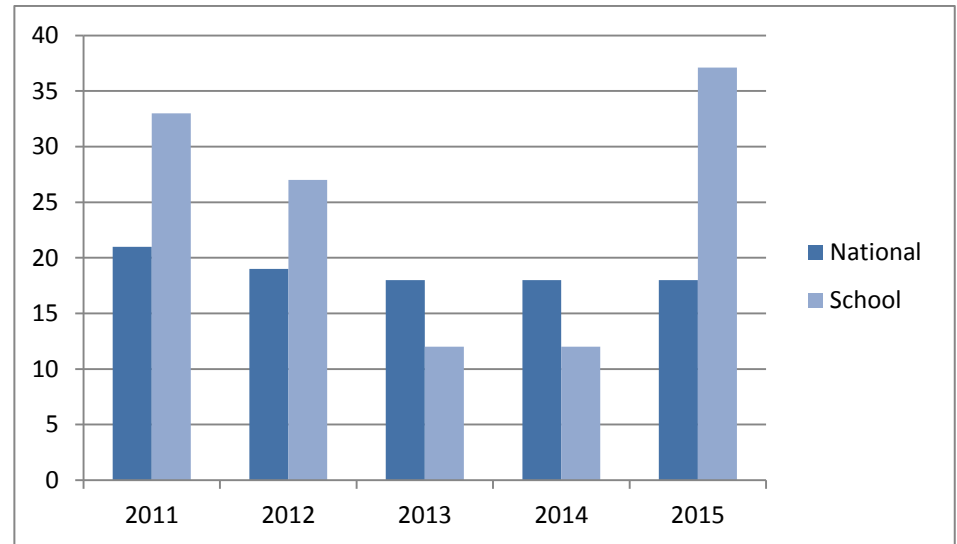
- Whitecross disadvantaged students 31% (compared to 36% for this group nationally in 2015)
- Whitecross non-disadvantaged students 59%.
- This indicates a gap of 28% which is line with the National average.

### % pupils achieving 3 levels of progress in English



Source: FFT Aspire & School data (SISRA)

### Gap between % pupils achieving 3LP in English vs National



### % of students making 3 levels progress in English

- Whitecross disadvantaged students 32% in 2015 (compared to 57% for this group nationally in 2015).
- Whitecross non-disadvantaged students 69% in 2015 (compared to 75% for this group nationally in 2015).

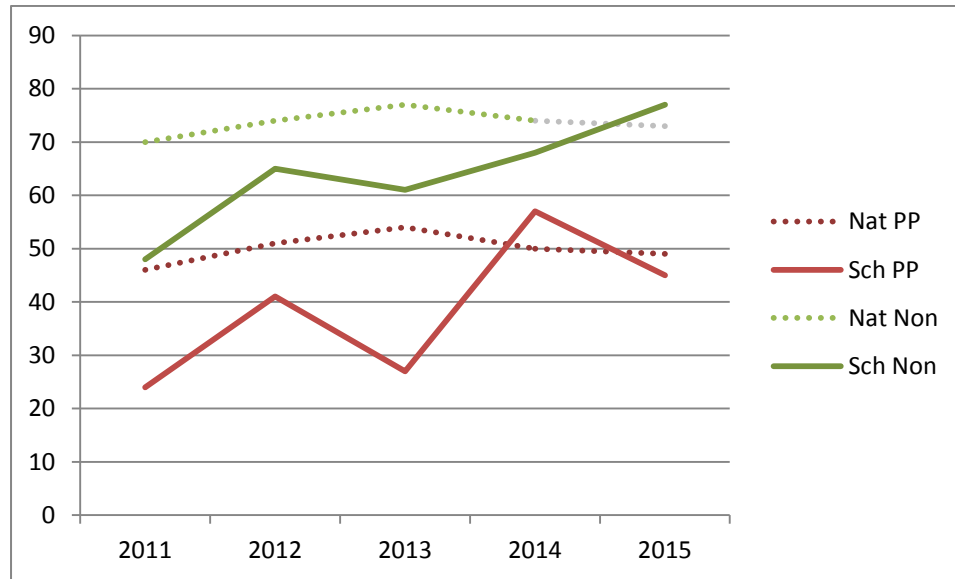
- This indicates a gap of 37% which is significantly higher than the National average.

### English A\*-C GCSE

- Whitecross disadvantaged students 37% in 2015 (compared to 51% for the disadvantaged group nationally and 74% for the non-disadvantaged group nationally).
- Whitecross non-disadvantaged students 74% in 2015 (compared to 74% for this group nationally in 2015).

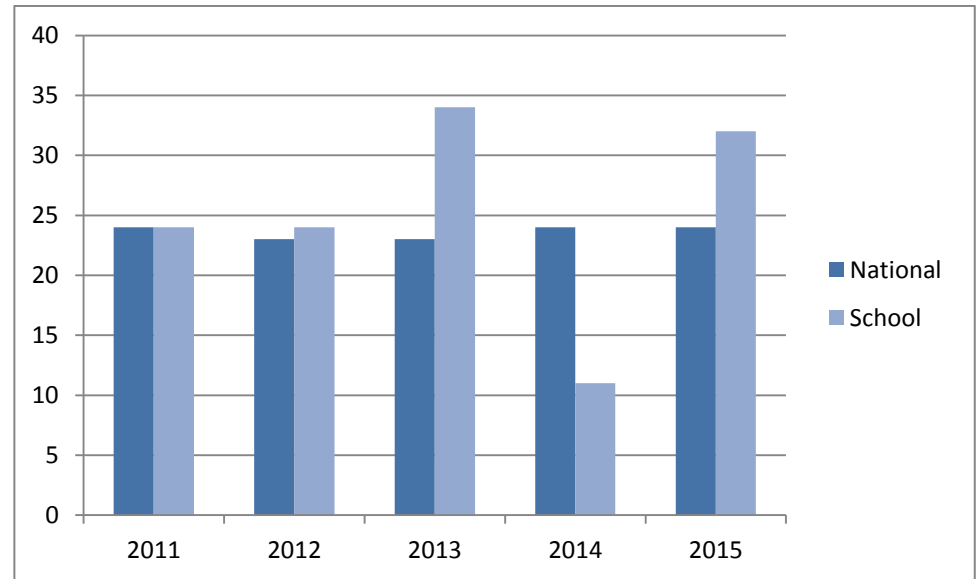
- This indicates a gap of 37% which is significantly higher than the National average.

### % pupils achieving 3 levels of progress in mathematics



Source: FFT Aspire & School data (SISRA)

### Gap between % pupils achieving 3LP in mathematics vs National



### % of students making 3 levels progress in Mathematics

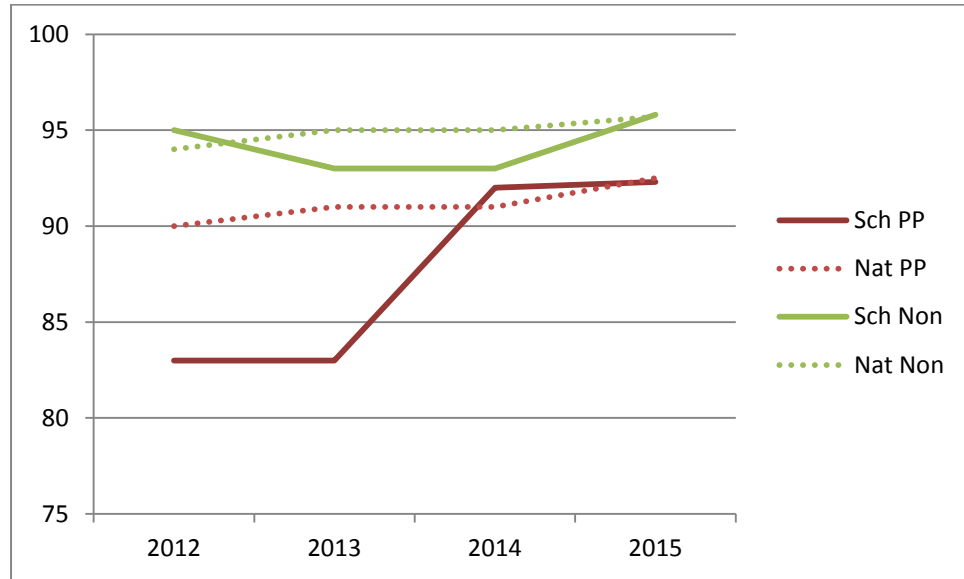
- Whitecross disadvantaged students 45% in 2015 (compared to 49% for this group nationally in 2015).
- Whitecross non-disadvantaged students 77% in 2015 (compared to 73% for this group nationally in 2015).
- This indicates a gap of 32%.

### Mathematics A\*-C GCSE

- Whitecross disadvantaged students 58% in 2015 (compared to 49% for this group nationally in 2015).
- Whitecross non-disadvantaged students 73% in 2015 (compared to 74% for this group nationally in 2015).
- This indicates a gap of 15% which is significantly less than the national gap in 2015 (25%).

## Attendance

### % attendance FSM ever 6 vs non FSM ever 6



Source: RAISEonline Summary Report based on unvalidated 2015 data

A continued focus from the attendance team has driven further improvements in attendance particularly with non-Pupil Premium pupils. Although the gap widened on the previous year it is still in line with the national figure.