

## Whitecross Pupil Premium Impact Statement

The Government introduced the Pupil Premium Grant in April 2011. This grant, which is additional to main Academy funding, is seen by the government as the best way to address the national inequalities between students eligible for free school meals (FSM), Looked After Children (LAC) and other students. This funding will ensure that funding to tackle disadvantage reaches the students who need it most. The Pupil Premium is allocated to schools and is clearly identifiable in our budget. Schools can decide how the Pupil Premium is spent as they are best placed to assess what additional provision should be made for the individual students within their responsibility. In making provision for socially disadvantaged students we recognise that not all students who receive free school meals will be socially disadvantaged. We also recognise that not all students who are socially disadvantaged are registered for or qualify for free school meals (FSM). We therefore reserve the right to allocate Pupil Premium funding to support any student or group of students we feel has been legitimately identified as socially disadvantaged.

The Pupil Premium is allocated to children from low-income families who are eligible for free school meals (FSM), or have been eligible at any point in the last 6 years (Ever6) in both mainstream and non-mainstream settings; children who have been looked after continuously for more than six months (LAC) and forces children. This year the Pupil Premium is worth a minimum of £935 per eligible pupil.

### How much funding do we receive?

The Pupil Premium funding we received for the academic year 2015 – 2016 was £174,435 (paid at £935 per student FSM and £300 per Service family student). We estimate that we shall receive £171,595 (estimated based on £935 per student FSM and £300 Service family student) for the 2015-16 academic year.

### Why is there a Pupil Premium?

Students should have the opportunity to achieve well regardless of their economic or social situation. This money helps us to support these students to achieve.



**“Excellence for all...excellence from all”**

## Are the Pupil Premium funds being used effectively?

Changes in performance measures make it difficult to show direct comparisons between 2016 and previous years. The table below summarises the headline performance measures of disadvantaged and disadvantaged students during 2015/16. The graphs that follow show the trend in comparable measures over the last five years.

### Headline Pupil Premium figures (FSM6 & LAC)

*KS4 15/16 Exams Report - Last Published: 29/09/2016 10:03:10*

*Calculated using the grades counting towards the School Performance. Grades have been grouped with the A\*-G grades where appropriate.*

Cohort Summary	Disadvantaged	Total	Percent
Cohort	ALL	163	100
	N	144	88.3
	Yes	19	11.7

Basic Measures	Disadvantaged	Total	Percent
BasicsLevel2(A* -CinEng&Mat)*	ALL	104	63.8
	N	95	66
	Yes	9	47.4

\* In2016, students taking the Englishlang/ lit pair now only require an entry in one (at C or above) to be eligible for the English component of the Basics L2 measure.

Progress/Attainment 8	Disadvantaged	Total	Percent
Average Attainment 8 Grade	ALL	4.96	
	N	5.07	
	Yes	4.15	
Average Total Progress 8	ALL	0.15	
	N	0.17	
	Yes	0.06	

5 A*-C Measures	Disadvantaged	Total	Percent
Students with 5 x A*-C inc English & Maths	ALL	95	58.3
	N	88	61.1
	Yes	7	36.8

E-Bacc Total Measure	Disadvantaged	Total	Percent
Students Entered For the E-BACC	ALL	31	19
	N	29	20.1
	Yes	2	10.5
Students in COHORT Achieving the E-BACC	ALL	22	13.5
	N	20	13.9
	Yes	2	10.5

Progress Measures	Disadvantaged	Total	Percent
Students making 3+ LOP in English	ALL	117	78.5
	N	107	79.3
	Yes	10	71.4
Students making 4+ LOP in English	ALL	54	36.2
	N	51	37.8
	Yes	3	21.4
Pupils included in English progress measure	ALL	149	91.4
	N	135	93.8
	Yes	14	73.7
Students making 3+ LOP in Maths	ALL	122	77.7
	N	109	78.4
	Yes	13	72.2
Students making 4+ LOP in Maths	ALL	58	36.9
	N	56	40.3
	Yes	2	11.1
Pupils included in Maths progress measure	ALL	157	96.3
	N	139	96.5
	Yes	18	94.7

Value Added Total Measure	Disadvantaged	Total	Percent
Capped8 +EM VA Score	ALL	1014.208	
	N	1015.108	
	Yes	1007.555	

Source: SISRA Analytics

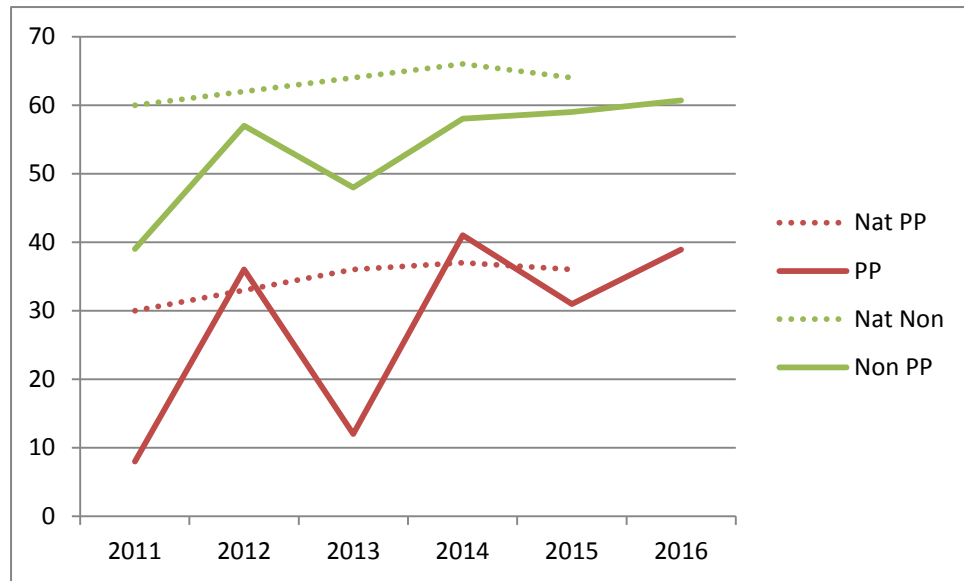
- Using 2016 Logic, 2015 VA Methodology and 2016 Attainment 8 estimates

- Follows DfE reporting guidelines for the 2016 performance tables

Source: SISRA in school data analysis

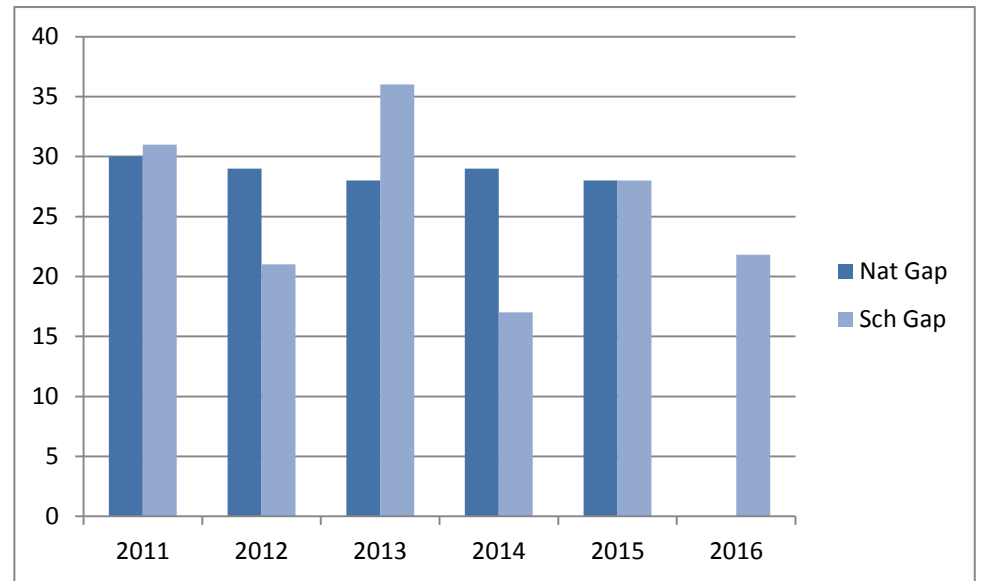
## Are we closing the gap?

### 5A\* - C incl. English & maths disadvantaged 6 vs non disadvantaged



Source: RAISEonline Summary Report based on unvalidated 2015 data, FFT Aspire & School data (SISRA)

### Gap 5A\* - C incl. English & maths disadvantaged 6 vs non disadvantaged

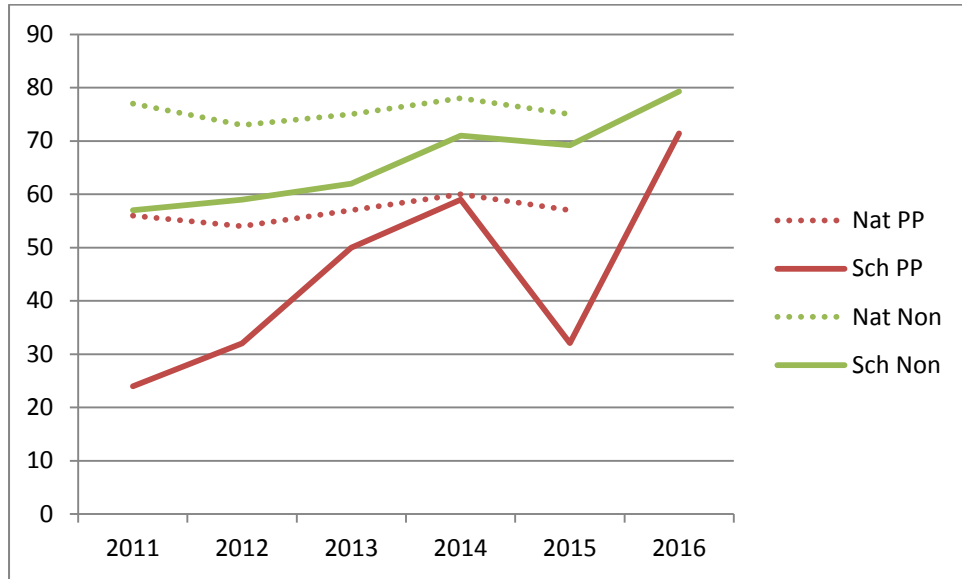


### 5+A\*-C including English and Mathematics

- Whitecross disadvantaged students 39% (compared to 36% for this group nationally in 2015)
- Whitecross non-disadvantaged students 61%.

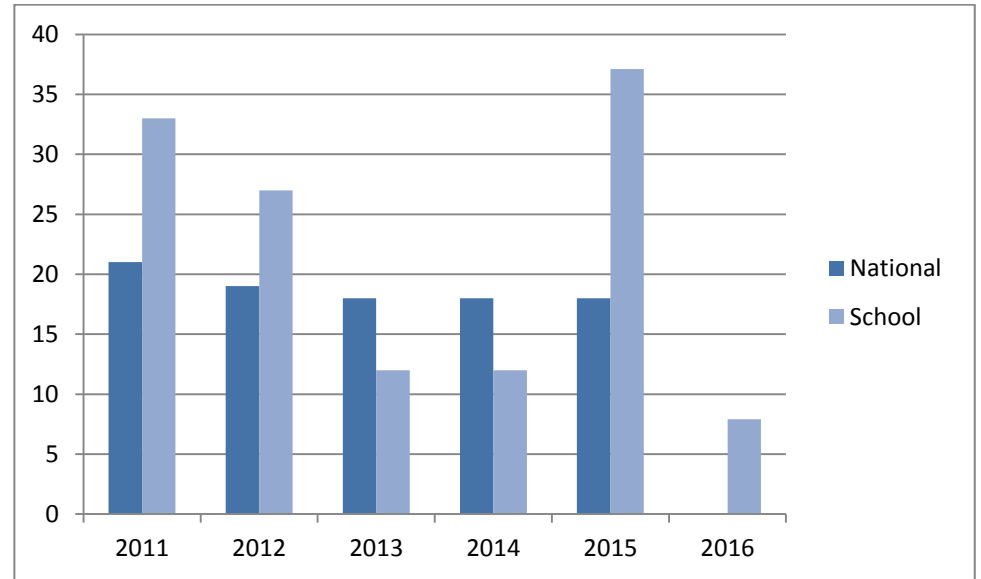
- This indicates a gap of 22% which is a significant improvement on last year and 6% better than the National average for 2015.

### % pupils achieving 3 levels of progress in English



Source: FFT Aspire & School data (SISRA)

### Gap between % pupils achieving 3LP in English vs National



### % of students making 3 levels progress in English

- Whitecross disadvantaged students 71% in 2015 (compared to 57% for this group nationally in 2015).
- Whitecross non-disadvantaged students 79% in 2015 (compared to 75% for this group nationally in 2015).

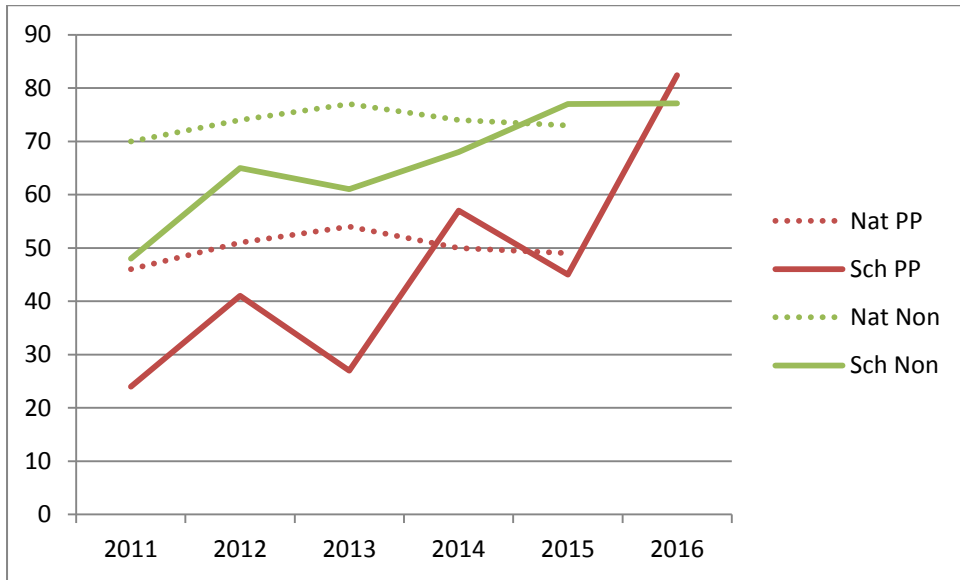
- This indicates a gap of 8% which is significantly lower than the previous year and much lower than the National average of 18% in 2015.

### English Language A\*-C GCSE

- Whitecross disadvantaged students 47% in 2015 (compared to 51% for the disadvantaged group nationally and 74% for the non-disadvantaged group nationally in 2015).
- Whitecross non-disadvantaged students 65% in 2015 (compared to 74% for this group nationally in 2015).

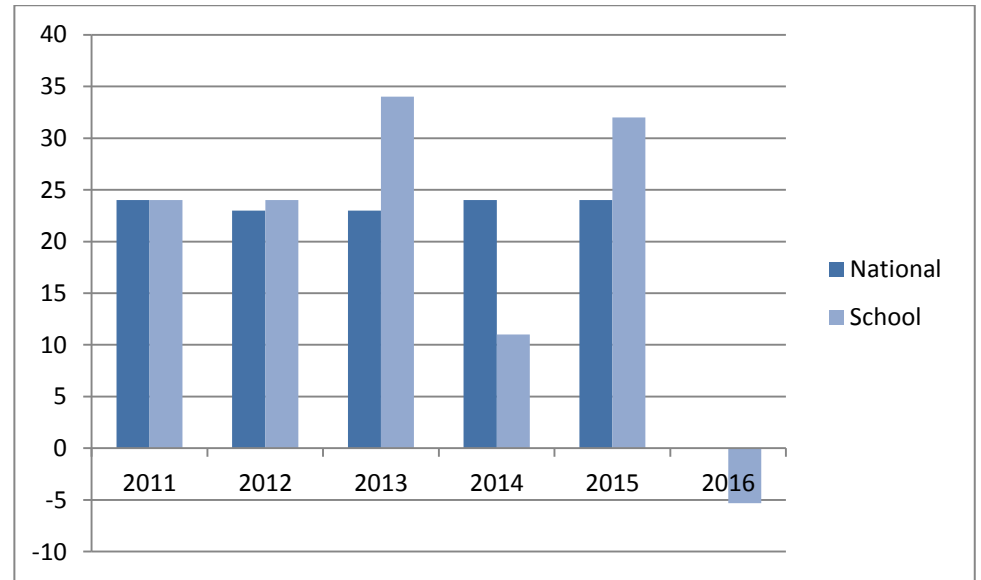
- This indicates a gap of 18% which is significantly smaller than the previous year and smaller than the National gap of 23%.

### % pupils achieving 3 levels of progress in mathematics



Source: FFT Aspire & School data (SISRA)

### Gap between % pupils achieving 3LP in mathematics vs National



### % of students making 3 levels progress in Mathematics

- Whitecross disadvantaged students 82% in 2015 (compared to 49% for this group nationally in 2015).
- Whitecross non-disadvantaged students 77% in 2015 (compared to 73% for this group nationally in 2015).

- This indicates a gap of -5%.

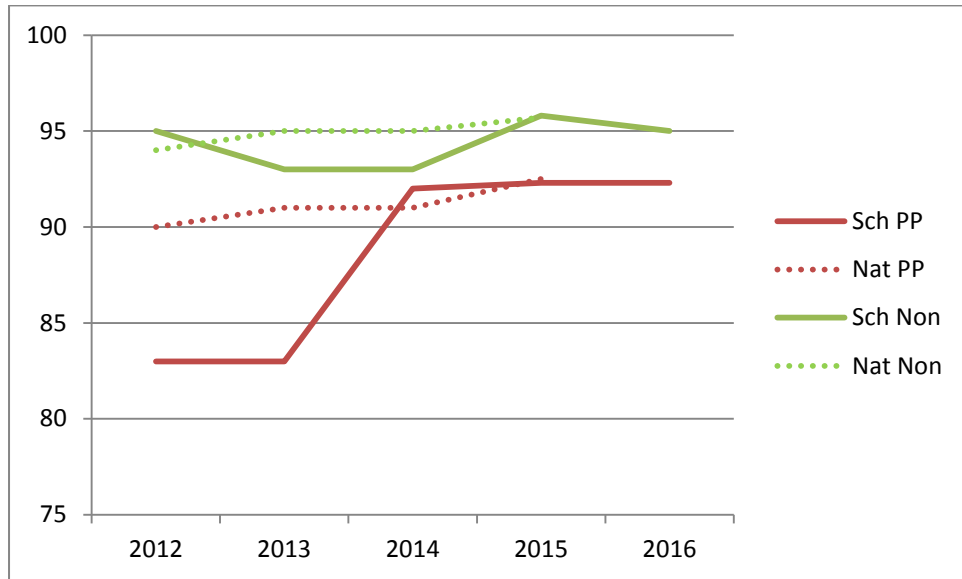
### Mathematics A\*-C GCSE

- Whitecross disadvantaged students 53% in 2015 (compared to 49% for this group nationally in 2015).
- Whitecross non-disadvantaged students 77% in 2015 (compared to 74% for this group nationally in 2015).

- This indicates a gap of 22% which is less than the national gap in 2015 (25%).

## Attendance

### % attendance Disadvantaged vs non Disadvantaged



Source: RAISEonline Summary Reports 2012 – 2015 & internal attendance data (2016)

A continued focus from the attendance team has maintained the performance of disadvantaged pupils.

A small dip in non-disadvantaged attendance has narrowed the gap slightly.